

Re-imagining Landscape Stewardship

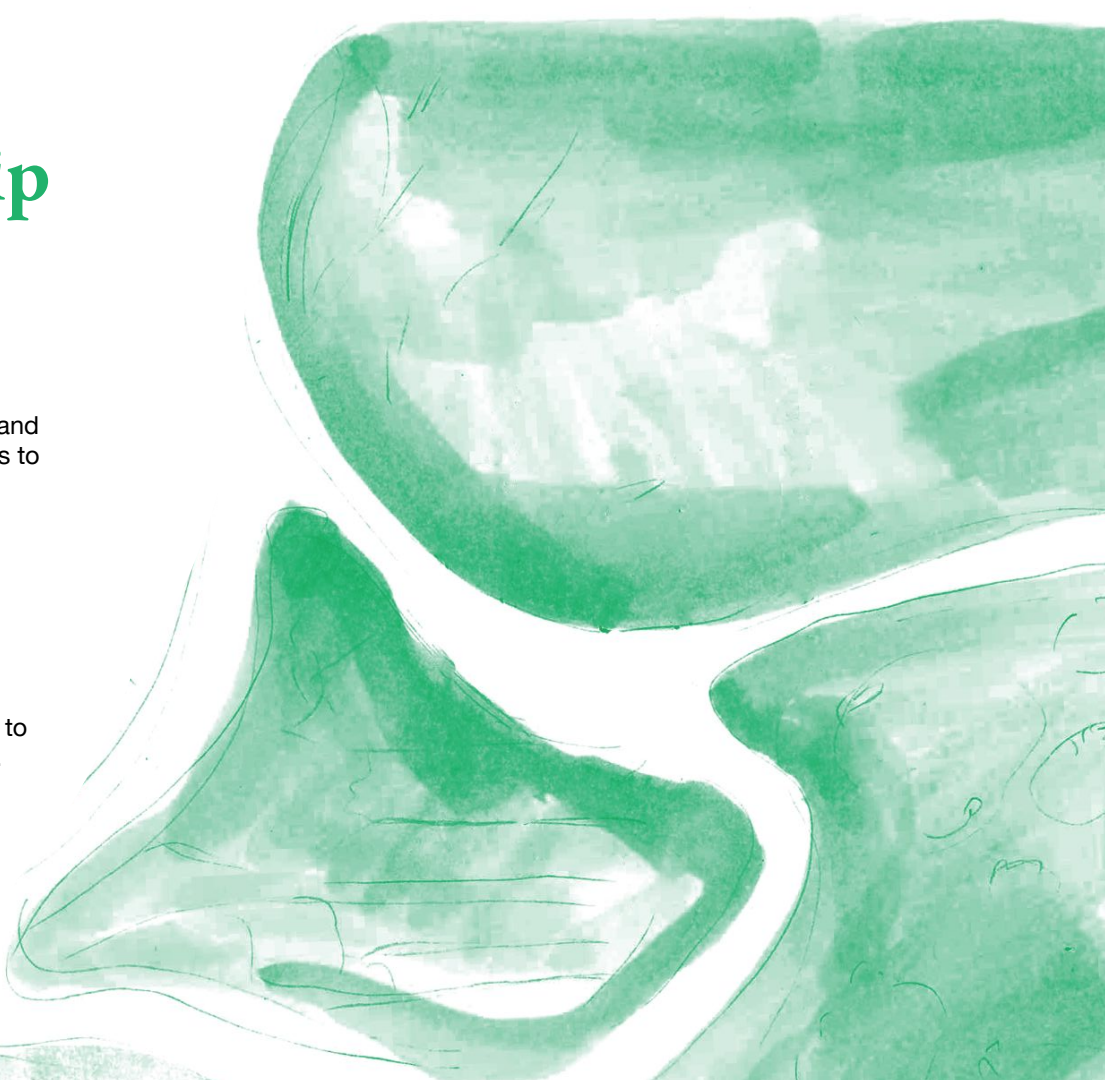
Tuesday 8th & Wednesday 9th April
Glasgow School of Art Creative Campus,
Blairs Farm Steading, Altyre Estate, Forres

This two-day gathering invites creative community engagement and bioregioning practitioners, regenerative designers and academics to explore the evolving definition of landscape care within nature regeneration across Scotland.

Collectively, we will re-imagine landscape stewardship through creative dialogue and collaborative visioning. We will explore alternative visions of landscape stewardship through a series of creative activities, discussions and film-showings.

Our gathering will culminate in the co-design of future proposals to foster creative and caring relationships with landscapes at scale.

Event Convener: Zoë Prosser - Z.Prosser@gsa.ac.uk



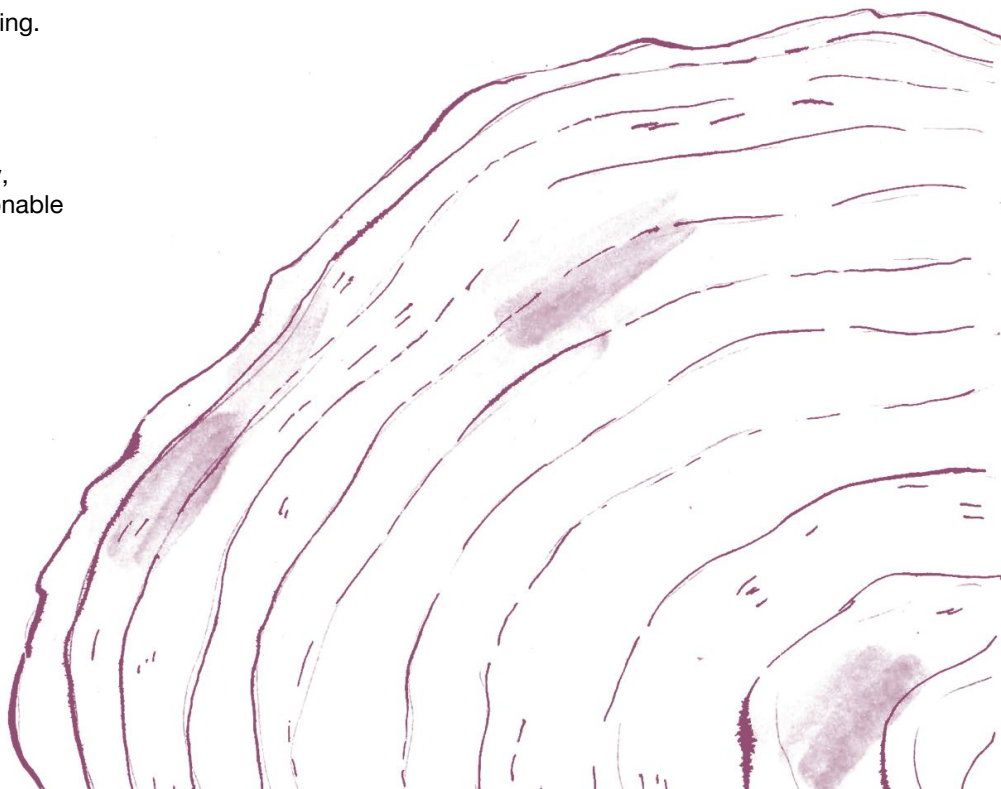
Re-imagining Landscape Stewardship

Envisioning & Designing Regenerative Transitions

Each activity will guide audiences through a process of creative re-imagining. This method enables us to envision different ways of living and being in experiential ways ([Lockton and Candy, 2019](#)) to consider our roles within designing regenerative transitions.

Together we will learn from expert speakers, engage with multidisciplinary, multinational practitioners and re-imagine landscape stewardship as actionable values that embed caring relationships through creative practices. Emerging design proposals will be framed as seeds for future action and collaboration, guided by the following questions:

- *How can we as individuals and communities use creativity to care for our environment?*
- *What values and exchanges should we nurture?*
- *How can we support organisations and academic institutions to enact and embed caring relationships with landscape?*
- *How do we foster the awarenesses, skills and roles that are needed?*



GSA Highlands and Islands

Our event will take place at the [Blairs Loch Stables](#) which is situated within the Altyre Estate alongside [the Glasgow School of Art Highlands and Islands](#) campus.

Please read our [GSA Guide to the Highlands and Islands](#) campus for more information including directions and information about the area.

If you require directions or guidance, please don't hesitate to contact:

Zoë Prosser - 07791081291



Re-imagining Landscape Stewardship

Day 1 Schedule: Exploring Alternative Visions

SCHOOL OF
INNOVATION
AND TECHNOLOGY
THE GLASGOW
SCHOOL OF ART

Tuesday 8th April: Loch of Blairs Stable, GSA Highland Campus, Blairs Farm Steading, Altyre Estate

Speakers Welcome

10.00 - 10.20	Arrivals and Refreshments
10.20 - 10.45	Opening and Welcome Professor Irene McAra-McWilliam Deputy Director and Vice Principal (Research & Innovation) Director GSA Highlands and Islands The Glasgow School of Art (GSA) Professor Gordon Hush Head of the School of Innovation & Technology, GSA
10.45 - 12.15	Landscape Reading Storywalk Sarah Hobbs , Strathspey Storywalks, The Scottish Storytelling Forum
12.15 - 13.15	Lunch

Re-Imagining Talks & Workshop

13.20 - 13.40	Setting the Scene: Re-imagining Landscape Futures Professor Stuart Candy , Tecnológico de Monterrey, Situation Lab Zoë Prosser , School of Innovation & Technology (SIT), GSA
13.40 - 14.20	Imagination-led Visioning: Culture & Wellbeing of Place Ádhamh Ó Broin , Culture, Heritage & Arts Assembly (CHARTS), Argyll & Isles
14.20 - 14.30	Refreshments
14.30 - 15.10	Imagination-led Visioning: Life-Ennobling Values & Exchanges Emily Harris and Vlad Afanasiev , Dark Matter Labs
15.10 - 16.00	Imagination-led Visioning: Bioregional Design Skills & Awarenesses Henriëtte Waal , Atelier LUMA
16.00 - 16.15	Refreshments
16.15 - 17.00	Film & Discussion Robbie Synge , Forest Floor
17.00	Close
18.30 - 20.00	Event Dinner

Re-imagining Landscape Stewardship

Day 2 Schedule: Enacting Preferable Futures

Wednesday 9th April: Loch of Blairs Stable, GSA Highland Campus, Blairs Farm Steading, Altyre Estate

Workshop & Panel Discussion

9.30 - 10.00	Arrivals and Refreshments	12.30 - 13.30	Lunch
10.00 - 10.20	Visions of Re-imagined Landscape Stewardship Zoë Prosser and Dr Michael Pierre Johnson , SIT GSA	13.30 - 14.00	Reflective Walk: Returning to Place
10.20 - 11.20	Workshop: Transitioning Environmental Economics Dr Katherine Simpson , One Health and Environmental Economics, University of Glasgow	14.00	Close
11.20 - 11.30	Refreshments		
11.30 - 12.30	Flipped Panel Discussion: Enacting Preferable Futures John Thackara , Tongji University Professor Stuart Candy , Tecnológico de Monterrey, Situation Lab Dr James Oliver , The Royal Melbourne Institute of Technology (RMIT)		

Event Contributors

Imagination-led Visioning



Ádhamh Ó Broin
CHARTS Argyll & the Isles

Ádhamh Ó Broin /AAgiv oh BRIN/ was brought up in central mainland Argyll and is the first person to raise a family of native speakers of the area's Gaelic dialect in 80 years, absorbing a huge storehouse of lore during 15 years of fieldwork with Gaelic elders the length and breadth of the Scottish Highlands. Ádhamh has had the privilege of stepping into ceremony with indigenous guests from across the globe whilst revitalising pre-Christian cosmology in the lands on which he grew up through the lens of the native language. The redevelopment of ritual protocol has been as much influenced by collaboration with visiting tradition-bearers from the Maori, Mohawk, Karajá, Anishinaabe and Minyungbal Peoples - to name but a few - as it has been from long hours of meditating and making offerings in sacred sites long disused. Ádhamh works as Gaelic Culture Officer at CHARTS Argyll and the Isles from where he joins us for Re-imagining Landscape Stewardship.

[Dùthchas Beò | Revitalising Reciprocity With The Gaelic Landscape](#)

[Argyll and Ireland | Cultural Re-Connections](#)



Emily Harris
Dark Matter Labs

[Emily Harris](#), FCA is a Chartered Accountant and a Fellow of the [ICAEW](#). She also holds an MA in Regenerative Economics (Distinction) from Schumacher College and a BSc in Medical Sciences from Imperial College. Completing her training with [Deloitte](#) in London, she was a manager in their Big Ticket Restructuring Team during the 2008 global financial crisis, before moving on to hold international CFO positions. Emily currently leads the Next Economics Lab and stewards the overall finance and economic innovation work for Dark Matter Labs.

[Cornerstone Indicators](#)

[Short summary report](#) from the recent Canadian Cornerstone Indicators project.

[Dark Matter Labs](#)



Vlad Afanasiev
Dark Matter Labs

[Vlad Afanasiev](#) is a strategic designer and researcher, with a focus on urban and environmental governance, the use of forecasting techniques, predictive simulation and modelling. Prior to joining Dark Matter Labs he was part of The Terraforming research program and worked on region and nation-scale strategic projects across Ukraine related to territorial development and decentralised governance. He currently serves as a City & Technology program tutor at IAAC in Barcelona. Vlad leads the technical development of tools and frameworks in Dm's Next Economics Lab.



Henriëtte Waal
Atelier Luma

Henriëtte Waal is a designer, researcher, co-founder of Atelier Luma and artistic leader of Veenweide Atelier. For 20 years, she has worked on topics such as water, landscape, food, crafts, biomaterials and animals, in different geographies. As co-founder of Atelier Luma and with her experience as Artistic / Research director, she has envisioned and led cross-disciplinary teams and has a track record in implementing successful social design projects. Through Veenweide Atelier, a newly launched initiative, Waal is linking a systemic design approach to the Frisian Peat Meadow Program, a plan to reduce emissions, soil subsidence and advance climate adaptation. Additionally, she is committed to the Social Design Master at Design Academy Eindhoven, fostering the next generation of designers attuned to ecological and social challenges.

[Atelier Luma](#)

Event Contributors

Enacting Preferable Futures



Professor Stuart Candy
Tecnológico de Monterrey, Situation Lab

Stuart Candy is a futures practitioner, educator, and artist dedicated to the development of social foresight; humanity's collective capacity for thinking and feeling into times to come. Stuart is known as a leading figure in the rise of experiential futures over the past two decades, helping to seed, spread, and grow practices now variously labelled speculative design, design fiction, design futures, and discursive design. Stuart is now based between Los Angeles, where he is Director of Situation Lab and an Advisor at NASA Jet Propulsion Laboratory, and Mexico City, where he is Distinguished Visiting Professor of Critical Futures in the School of Architecture, Art and Design at Tecnológico de Monterrey.

[The Futures of Everyday Life](#)

[Design and Futures](#)

[The Thing From The Future](#)

[The Futures Bazaar](#)



John Thackara
Visiting Professor,
Tongji University

John is an author, curator and professor exploring the agenda of designing for life - and caring for place - within social and ecological systems. He was commissioner of the UK social innovation biennial Dott (Designs of the Time) 07, and the French design biennial City Eco Lab. In 2019 he curated the Urban-Rural expo in Shanghai. He is visiting Professor at Tongji University in Shanghai, and Politecnico di Milano, and he is a Senior Fellow at the Royal College of Art. His 12 books have been published in 14 languages including his last two in Chinese.

[Designing for Life](#)

[Landscapes of Care](#)



Dr James Oliver
Associate Professor, School of
Design at RMIT University

James Oliver has more than 20 years of professional experience across a range of disciplines and sectors (through creative arts, design, social sciences, arts development, community and place-based practices). This has nurtured a collaborative 'practice-research' career beyond traditional disciplinary boundaries, particularly at the intersections of cultural relations, creative practice research, and Indigenous Practice Research. James is an Associate Professor in the School of Design at RMIT University. He has also worked as an arts development officer at the former Scottish Arts Council, and as a researcher, speechwriter, and press officer at the Scottish Parliament.

[Cultural collaboration, place-based learning, practice-research and writing](#)



Dr Katherine Simpson
The School of Health and Wellbeing
at the University of Glasgow

Katherine Simpson is an Environmental Economist with over a decade of interdisciplinary research experience spanning ecology, economics, and environmental policy. Her work focuses on the design of nature markets, agri-environment schemes, and the economic valuation of ecosystem services. She is a Lecturer in the School of Health and Wellbeing at the University of Glasgow. With a background in applied economics and conservation science, her research supports innovative, equitable approaches to natural capital. She has recently begun exploring community benefit, equity, and alternative incentive models to ensure ecological outcomes align with social and place-based values.

[RESPECT \(Rapid Engagement with Stressed Peatland Environments and Communities in Transformation\)](#)

Event Contributors

Creative Landscape Connections



Sarah Hobbs
Strathspey Storywalks,
The Scottish Storytelling Forum

Sarah runs Storywalks to place stories back where they belong in the landscape and skyline – re-storying the land, with a focus on quiet, hidden or silenced voices. Storywalks are very place-based, and explore connections and layers that exist within a location – ecology, folklore, social history and Gaelic culture. From being thoroughly rooted in the Cairngorms, her work highlights the global context and relevance of land and people here, and particularly how empire and colonialism play out in rural landscapes. Her work background is place-based community-led social justice and she has 20 years' experience of working with racialised communities in the creative arts to tackle systemic health and education inequalities.

[Strathspey Storywalks](#) and [Instagram](#)

[Highland hospitals built from the riches of Empire](#)



Robbie Synge

Based in Strathspey, Robbie Synge is an artist and choreographer working physically and playfully to explore connections between human/non-human bodies, materials and landscapes. His main aim is to bring focus and value to embodied possibilities of being and doing. Originally studying human physiology and later pursuing dance practice, his practice tends to involve tactile or mechanical interactions and working with people of a broad range of backgrounds, demographics and abilities. His artist residency in partnership with land restoration organisation Cairngorms Connect (2020-22) has led to working part-time with the organisation, focusing on involving and increasing the agency of young people.

[Robbie Synge's vision: Art, community, and landscape restoration in the Cairngorms](#)

[Cairngorms Connect](#)

[Endangered Landscapes and Seascapes Artist Residency with Cairngorms Connect](#)



Heather Fulton
ATLAS Arts

Heather Fulton is the Producer at ATLAS Arts, an arts charity based in Skye, Raasay & Lochalsh. ATLAS Arts organises collective art projects across Skye, Raasay and Lochalsh – on the North West coast of Scotland. We work with artists and local residents to have conversations that are rooted in this place and time through a programme of screenings, gatherings, residencies, meals, workshops and sharings. Heather has included a photo of Clach an Tuill, a very special rock that lives near her home.

[Samhla - Lauren Gault & Tuath](#)

[Samhla Publication \(PDF\)](#)

[Dàn Fianais - Andrew Black](#)

[School of Plural Futures - Emmie McLuskey](#)

Further Reading

Landscape Decision-making (The Glasgow School of Art)

[\(Re\) Designing Landscape Stewardship](#) is a project by Dr Michael Pierre Johnson and Zoë Prosser, which explores the evolving definition of landscape care within nature restoration activities across Scotland.

[Communities of hope: design-led innovation for landscape decision making](#)

McHattie, Lynn-Sayers, Dixon, Brian and Prosser, Zoe (2025) *Communities of hope: design-led innovation for landscape decision making*. Landscape Research.

[Place-based Research: Landscape Decision-making in Scotland Design Innovation & Land Assets \(DI&L\) Design Innovation & Cultural Resonances \(Resonance\)](#)

McHattie, Lynn-Sayers, Johnson, Michael and Prosser, Zoe (2023) *Place-based Research: Landscape Decision-making in Scotland Design Innovation & Land Assets (DI&L) Design Innovation & Cultural Resonances (Resonance)*. Project Report. The Glasgow School of Art.

Transforming Environmental Economics

[RESPECT \(Rapid Engagement with Stressed Peatland Environments and Communities in Transformation\)](#) is a new three-year research project led by the University of Glasgow. It explores how to support land use change on peatlands to meet net zero goals, while also addressing social, ecological and governance challenges. Working across disciplines and in collaboration with land managers and communities, RESPECT is developing practical tools and policy proposals to support more inclusive and effective restoration. The project aligns closely with Reimagining Futures by focusing on how climate action can work alongside community needs, heritage, and place-based values.

[Carbon Markets, Public Interest and Landownership in Scotland: A discussion paper \(2022\). Dr Jill Robbie and Dr Giedre Jokubauskaite](#)

